



**Goals and Objectives of the Minnesota Horse Council**

- ◆ Promote and/or support equine educational activities
- ◆ Improve communication in all horse related activities with the general public
- ◆ Gather information of value to equine related activities
- ◆ Distribute gathered information as appropriate
- ◆ Provide expertise, consult and advise
- ◆ Establish, develop and enhance equine trails and other infrastructure and encourage their prudent use

**2009 BOARD OF DIRECTORS OFFICERS**

**President**

Mark Ward ♦ 651-436-6557  
markward@windyridgeranch.com

**1st Vice President**

Darrell Mead ♦ 763-420-3697  
darrellmead@comcast.net

**2nd Vice President**

Tracy Turner ♦ 651-351-7206  
turner@anokaequine.com

**Secretary**

Dawn Moore ♦ 952-949-6659  
dmoore834@comcast.net

**Treasurer**

Tim Bonham ♦ 612-721-1007  
t-bonham@scc.net

**DIRECTORS**

- Carol Dobbelaire.....763-684-0709
- Glen Eaton.....952-922-8666
- Teresa Hanson.....763-434-2799
- Judy Jensen.....763-972-6397
- Trina Joyce.....612-729-7798
- Sue McDonough.....651-699-8117
- Marian Robinson.....763-588-0297
- Jan Schatzlein.....612-825-2459
- Missie Schwartz.....763-428-7532
- Tom Tweeten.....952-226-4190
- Christie Ward.....651-603-8702
- Lynn Wasson.....320-398-8085

**TONY GASSER MEMORIAL SCHOLARSHIP APPLICATIONS DUE NOVEMBER 1**

The Minnesota Horse Council is currently accepting applications for Tony Gasser Memorial Scholarships. Several educational scholarships of at least \$2,000 are offered each year.

**Who is Eligible?**

- ◆ Applicants majoring in, or planning to major in, any equine-related field of study
- ◆ High school seniors and college students
- ◆ Minnesota residents

**Additional Requirements**

- ◆ Three letters of recommendation (no more than one page, please) from individuals who are familiar with the applicant's equine experience and ability, leadership ability, and/or scholarship
- ◆ Proof of acceptance or enrollment from the school in which the scholarship will be used (required only after the scholarship is awarded).

**General Selection Criteria**

- ◆ Equine background
- ◆ Leadership capability
- ◆ Scholastic achievement
- ◆ Sense of direction in furthering education
- ◆ Financial need

**Comments**

- ◆ All scholarship applications and letters of recommendation should be mailed or delivered directly to the address below. Please DO NOT send your application by Priority or Express Mail.

Minnesota Horse Council Scholarship Committee  
c/o Trina Joyce, Chair  
3035 34th Ave. S.  
Minneapolis, MN 55406-2103

- ◆ All application materials must be received by **November 1**
- ◆ Scholarships will be awarded at the Minnesota Horse Council annual meeting in January.
- ◆ Scholarships will be paid in the name of the recipient and the school involved.
- ◆ The names and fields of study of each scholarship recipient will be published in press releases and on the MHC website [www.horses-mn.org](http://www.horses-mn.org)

**MN Horse Council 3rd Annual Director's Ride**

When: October 9, 10 and 11

Where: Crow-Hassan Park Reserve (Blue Stem)

What: Horseback riding, camping, food, and fun

Who: Bring the whole family.

Cost: None. You are responsible for your own food except where noted.

**AGENDA**

**Friday**

- ◆ Arrive anytime after 3 pm
- ◆ Short ride at 5:30 pm
- ◆ Campfire and snacks at 8:00 pm

**Saturday**

- ◆ Morning ride at 10:00 am
- ◆ Lunch is on your own
- ◆ Afternoon ride at 1:30 pm
- ◆ Appetizers and dinner at 5:30 pm
- ◆ Campfire at 8:00 pm

**Sunday**

- ◆ Ride at 9:30 am
- ◆ Must leave campgrounds by no later than 1:00 pm

Join us for all or any of the above events. The campgrounds are beautiful with plenty of space to park any size rig. There is no electricity and water is available by pumping.

RSVP to [darrellmead@comcast.net](mailto:darrellmead@comcast.net) or call 952-356-2078 by October 3.



# Minnesota Horse Council News

## GRANT APPLICATIONS DUE OCTOBER 1

The Minnesota Horse Council (MHC) uses the revenue from the Minnesota Horse Expo to offer grants to charitable/non-profit equine-related organizations in Minnesota. Grants of up to \$7,000 are given as "seed money" to inspire new projects, capital improvements, or expansions of existing projects or services.

All applications must be received by October 1. During December, Grants will be chosen by the MHC and all applicants notified. For more information, see [www.MnHorseCouncil.org](http://www.MnHorseCouncil.org).

## 2010 MINNESOTA HORSE COUNCIL ANNUAL MEETING

The MHC holds the Annual meeting on the third Saturday in January each year. This helps members remember the date and allows other organizations to plan their meetings and banquets without a date conflict.

Please mark your calendars for  
January 16, 2010 at the Northland Inn in Brooklyn Park.

UNIVERSITY OF MINNESOTA  
**EXTENSION**

### QUARTERLY LUNCH AND LEARN WEBINAR

Wednesday, October 21 ♦ Topic: Equine Genetics

To join, go to: <https://umconnect.umn.edu/horsewebinars/>  
There is no charge to participate in these webinars.

### ON-LINE REGISTRATION NOW OPEN FOR FALL REGIONAL HORSE OWNER PROGRAMS

Agendas and additional information can be found at  
[www.extension.umn.edu/horse](http://www.extension.umn.edu/horse)

**Saturday, October 3, 2009** ♦ 9:30 am to 4:00 pm

*Program sponsored by a USDA NRI Integrated Research Grant*  
University of MN Leatherdale Equine Center ♦ St. Paul, MN  
Register on-line at <https://www.regonline.com/StPaulHorse>

**Saturday, October 24, 2009** ♦ 1:00 to 4:00 pm

*Co-sponsored by the U of M and Fergus Falls Community Education*  
Red Horse Ranch Arena ♦ Fergus Falls, MN  
Register on-line at <https://www.regonline.com/FergusFallsHorse>

**Saturday, November 14, 2009** ♦ 1:00 to 4:00 pm

*Co-sponsored by HLWW Community Education*  
Middle School ♦ Howard Lake, MN  
Register on-line at <https://www.regonline.com/HowardLakeHorse>

## Meeting with DNR Tuesday June 30

Joe Samon and Darrell Mead met with DNR officials to discuss what went wrong at Hay Creek following the clearing of timber. Discussion was around what could be done to rectify the situation.

Attending the meeting:

Craig Blommer, Area Supervisor, Rochester  
Keith Simar, Head of Forestry Recreation in the State, Brainerd  
Grant Scholen, Trails and Waterways, Trails Coordinator, St. Paul  
Wayne Demarow, Forestry Manager, Region 3  
Dan Collins, Parks and Trails Manager, Region 3  
Joe Brown, Forestry Division, Lake City  
Terry Helbig, Forestry Division, Lake City  
Mike Wachholz, Forestry Division, Lake City

What has happened is related to the economy. They are into the second year of a five year contract. The first contractor forfeited his down payment because there was no money to be made in pulp wood. The second contractor would only do it in the summer months. For the managing of the forest the logging had to be done.

Unfortunately the group thinks the trails will get worse before they get better. We do have the attention of a lot of different people and the job will be more carefully watched. Forestry is there daily and will pull the loggers out if the weather gets wet. This originally was not done resulting in the trail damage.

Keith Simar commented on the possibility of new trails as he is afraid trail users will try and make new trails on their own.

According to Grant Scholen, one of the biggest challenges we face when providing recreational trails in State Forests is to be compatible with the primary function of State Forests, which is to grow trees as a sustainable resource.

It is important to know horse trail pass money was not used in the renovation of the trails at Hay Creek. You may recall that \$35,000 in Horse Trail Pass funds from 2007 went into the work at Hay Creek, which paid for about half of the parking lot improvements. The other \$35,000 for the parking lot, plus all of the trail work, was paid for with State Forest non-motorized trail maintenance funds.

Horse Trail Pass Sales in 2009: Sales starting in January to mid-June 2009 are at about \$68,000. Here are the figures for this same period: 2007: \$68,000 ♦ 2008: \$61,000

Based on sales to date, we may have a similar revenue year to the first year (2007), which generated about \$126,900 by the end of that calendar year. In 2008, the pass generated about \$112,000.

Respectfully submitted,  
Darrell Mead, Trail Blazer's Chairman

## The AAEP Updates Statement on Genetic Defects in Horses

The AAEP Board of Directors approved the following updated position statement on genetic defects in horses during their recent meeting in Columbus, Ohio.

### Congenital Defects

Congenital defects include all undesirable traits and pathologic conditions present at birth whether they are genetic or due to intra-uterine events that results from extra-uterine influences. Congenital defects do not necessarily indicate inheritance; they simply indicate that the defect was present at birth.

### Inherited Tendencies

There are characteristics in horses that are influenced by a wide variety of genes, whose pattern of inheritance is complex and whose expression has strong environmental influences. Horses have been selectively bred for centuries to promote or discourage these characteristics. The selection for or against these inherited tendencies is the basis for our current breed registries. Size, power, color, speed, conformation and many other characteristics that are genetically influenced are selected for or against by certain breed registries. Variations from ideal may be undesirable but they are not deemed to be genetic defects.

### Genetic Defects

Genetic defects are pathologic conditions of proven genetic origin. These may be the result of a mutation in a gene of major effect or mutations in multiple genes (polygenic) whose effects combine to produce a deleterious or undesirable result. The degree to which some traits are expressed in horses carrying particular mutations can be influenced by environmental factors. This is called incomplete penetrance.

### Undesirable Traits

An undesirable trait, as designated by certain breed registries, is a condition or behavior which may or may not be present at birth, may develop over time, may or may not be a genetic defect, but precludes registration of that animal. A variation in color is an example of a characteristic that may be considered by a breed to be undesirable. Concealment of such undesirable traits by any means, including surgery, is prohibited by breed registry. It is therefore unethical for a veterinarian to perform such treatments, except when the treatment is intended to improve the health of the horse, and when the veterinarian reports the treatment to the breed registry.

### Genetic Tests Available for Horses

Tests for mutations in single genes are currently (May 2009) available for nine diseases.

#### Autosomal Dominant

- ♦ Hyperkalemic Periodic Paralysis (HYPP) in the Quarter Horse
- ♦ Type 1 Polysaccharide Storage Myopathy (PSSM) in numerous breeds
- ♦ Malignant Hyperthermia in Quarter Horse related breeds

#### Autosomal Recessive

- ♦ Overo Lethal White Syndrome in the Paint Horse
- ♦ Combined immunodeficiency in Arabian Horses
- ♦ Glycogen Branching Enzyme Deficiency (GBED) in Quarter Horse related breeds
- ♦ Junctional Epidermolysis Bullosa (JEB) in Belgians
- ♦ JEB in Saddlebred horses
- ♦ Hereditary Equine Regional Dermal Asthenia (HERDA) in Quarter Horse-related breeds

There are numerous other conditions strongly suspected to be due to mutations in genes of major effect, but genetic tests for these conditions are not yet available. In some cases, such as Cerebellar Abiotrophy in Arabians, a marker that is linked to the genetic defect has been identified, but the gene and genetic mutation responsible for the disease are not yet known. New information in equine genetics is being generated very quickly, and any document of this type will require frequent updates, at least for the next few years.

#### AAEP Position

##### Surgical Correction of Undesirable Traits and Genetic Defects

According to the American Veterinary Medical Association, surgical correction of "genetic defects" for the purposes of concealing the defect is unethical. If surgical correction is undertaken for the purpose of improving the health of the individual, then it should be accompanied by sterilization to prevent the perpetuation of the genetic defect. The AAEP agrees with the intent of this position. Further, surgical correction of any characteristic specifically named by the breed organization as being prohibited, for the purpose of concealing the characteristic for obtaining registration, would be considered fraudulent and unethical. Such procedures offer no benefit to the horse and are intended only to deceive the breed organization. The AAEP does support surgical correction of conditions that are in the best interest of individual horses.

##### Identification of Genetic Traits

AAEP supports the use of genetic testing by veterinarians or breed associations to identify genetic mutations in animals so that owners can make informed decisions about breeding, purchase and specific treatments. Breed associations should be contacted to determine if there are any restrictions on registration of horses with genetic defects. Licensed laboratories should be used for genetic testing.

More information on equine genetic diseases is available on these websites:

<http://www.cvm.umn.edu/umec/lab/home.html>

<http://www.vdl.umn.edu/vdl/ourservices/equineneuromuscular/home.html>

<http://www.vgl.ucdavis.edu/services/horse.php>

<http://www.ca.uky.edu/gluck/ServEPVL.asp>

<http://www.uky.edu/Ag/Horsemap/>





**AMERICAN HORSE COUNCIL**  
Your Unified Voice in Washington

202-296-4031 ♦ www.horsecouncil.org



### **Rolapp Award Goes to Congressman Ben Chandler**

The American Horse Council's 2009 Rolapp Award was presented to Congressman Ben Chandler of Kentucky for his outstanding support of the horse industry. The award was presented to Congressman Chandler on June 16 at a

Congressional Reception in the Capitol during the American Horse Council's National Issues Forum in Washington, DC.

Each year the American Horse Council presents the Rolapp Award to that Member of Congress who has done the most for the horse industry. The Award is presented in honor of Rich Rolapp, the former President of the AHC who passed away in 1993. Previous award winners include Senators Mitch McConnell and Jim Bunning, Congressmen Hal Rogers, Jim McCrery, Bart Gordon and Congresswoman Karen Thurman, among others.

In presenting the award, Jay Hickey, President of the AHC, said that "This year's winner is most deserving. The horse industry very much appreciates Mr. Chandler's support, hard work and tenacity and is pleased to present him with the Rolapp Award."

Congressman Chandler received his undergraduate and law degree from the University of Kentucky. Prior to this election to Congress he served two terms as Kentucky's Attorney General. In 1995 he became the youngest Attorney General in the Nation and was reelected without opposition in 1999.

Mr. Chandler was elected to Congress in 2004 in a special election and has taken the lead on many issues of importance to Central Kentucky families. He is a member of the Blue Dog conservative Democrat Caucus and has continually backed fiscally responsible budget plans that extend middle-class tax cuts while slashing the federal deficit. Congressman Chandler has cosponsored legislation to lower the cost of prescription drugs, secure funding for veterans health care and fully fund education reform for our children.

"When he first came to Congress, Mr. Chandler was a member of the House Agriculture Committee, where he was very helpful in extending federal disaster relief to horse breeders," said Hickey.

In January 2007, Congressman Chandler was selected by his Democratic colleagues to serve on the coveted House Committee on Appropriations, where he tenaciously pursued initiatives that promote the long-term economic growth of his district and his constituents. "Mr. Chandler has been very supportive of bringing the World Equestrian games to his district of Lexington, Kentucky in 2010 and has worked overtime to secure federal assistance for the infrastructure needed to host the games and make them run smoothly, said Hickey. "Congressman Chandler understands the importance of the \$102 billion horse industry not only to Kentucky but to the nation. The American Horse Council very much appreciates Mr. Chandler's long-standing support and is pleased to present him with the 2009 Rolapp Award."



### **2009 Van Ness Award Presented to Sally Blount of Iowa**

The American Horse Council's 2009 Van

Ness award, named for the late Marjorie Van Ness, and sponsored by New Jersey Horse Council was presented to Sally Blount of Iowa at the AHC's National Issues Forum on Tuesday June 16, 2009 in Washington, D.C.

Sally has worked tirelessly to maintain a thriving horse industry in her state and her community. She has been an Iowa Horse Council board member for nearly 30 years and the representative to the State Horse Council Advisory Committee for many years.

She has worked on projects with various youth groups, including 4-H, Future Farmers of America, and Ag in the Classroom. Her nominating materials note that she has answered questions about horses from all over the country for 40 years.

The Iowa Horse Fair celebrated its 25th anniversary this year. Sally was involved in organizing the first horse fair and chaired or co-chaired the fair for several years thereafter.

Sally is not a stranger to the Iowa statehouse. She wrote, lobbied for, and succeeded in passing Iowa's Equine Liability legislation. She also lobbied for passage of the Iowa pari-mutuel horse racing legislation. After it passed, she served as a timer at the Iowa State Fair racetrack.

She helped to publish the Iowa Horse Industry Facts which includes data about the horse industry, shows, attendance, and more. She formulated the idea of an exhibition of the horse in Iowa history, sold the Iowa Historical Society on the idea with Carolyn Hasbrook, and it resulted in "Hay Days: The Horse in Iowa History" exhibit which opened in 1998.

In the material nominating Sally for this award it says, "It is important to note that Sally's opinions are not always the popular opinion or met with favor by others, but no one can question that she has the best intentions and the interest of the horse, the club, and horse activities uppermost." AHC President Jay Hickey agreed by saying "That is a wonderful compliment and having been on the receiving line of some of those opinions, I agree with it. Sally has those interests at the center of her core."



202-296-4031 ♦ www.horsecouncil.org

## Tourism Promotion Bill Introduced in Senate

Equine tourism is a growing and diverse segment of the horse industry. It encompasses many parts of the industry including recreation, showing and racing. Marketing the U.S. as an equine tourism destination abroad will be important to its future growth and will benefit the entire horse industry. Legislation that could aid those efforts has now been introduced in the Senate.

The Travel Promotion Act of 2009 (S.1023) introduced by Senator Byron Dorgan (D-ND) on May 12 will help market the U.S. as a tourist destination to people around the world. Specifically, the bill would create a non-profit Corporation for Travel Promotion that would be responsible for correcting misperceptions regarding U.S. entry policies, and providing useful information to foreign tourists and others interested in traveling to the United States.

Separately, an Office of Travel Promotion will be setup in the Department of Commerce. This office would be responsible for programs to increase the number of international visitors to the United States and for collecting data on those visitors.

The Senate has recently been debating this legislation and the AHC hopes it will win quick approval. The House of Representatives, which passed similar legislation last year, is waiting for Senate action on this bill.

## Unwanted Horse Coalition Releases National Survey Results

The findings from the Unwanted Horse Coalition's (UHC) Study on Contributing Factors Surrounding the Unwanted Horse Issue are now available at [www.unwantedhorsecoalition.org](http://www.unwantedhorsecoalition.org). The study is the first of its kind to assess the causes and magnitude of the unwanted horse population in the United States.

Results indicate that the problem of unwanted horses is perceived to be growing on many fronts. More than 90% of participants believe the number of unwanted horses, as well as those neglected and abused, is increasing. Almost all participants (87%) indicate that in the past year, the issue of unwanted horses has become "a big problem," compared with only 22% who said the problem was important three years ago. Respondents also report that the number of horses being euthanized is increasing.

In light of one of the worst economic downturns in U.S. history, the economy is considered to be a significant contributor to the unwanted horse problem. The closing of the nation's processing facilities, changes in breed demand/indiscriminate breeding, as well as the high costs of euthanasia and carcass disposal are also cited by respondents as major contributors.

Regarding placement options for unwanted horses, 63% of equine rescue/retirement facilities polled report they are at near or full capacity and, on average, turn away 38% of the horse brought to them. Capacity is clearly the issue in that as many horses stay for life at the facilities as are adopted out.

*Unwanted Horse Coalition - continued on page 6*



## Second Kentucky International Equine Summit Scheduled

The second biennial Kentucky International Equine Summit, presented by the Equine Industry Program in the University of Louisville College of Business, in cooperation with the Equine Initiative in the University of Kentucky College of Agriculture, will be held in downtown Lexington, Kentucky, April 26 and 27, 2010.

The purpose of the Summit, whose 2008 inaugural featured more than 90 speakers and panelists from around the world, is to bring together the leaders of the equine industry, which are defined as "officers, directors and committee members of state, national or regional associations and breed registries," in a common search for the best solutions to industry challenges.

"We consider horse associations to be crucial institutions, and we believe that the true leaders of our broad and unusually diverse industry are those individuals who have moved beyond being merely members of their organizations to assume a role in leadership on boards and committees," says the University of Louisville's Rich Wilcke, chairman of the Summit.

The Summit is actually a six-day conference in two days since the format is three simultaneous sessions on different topics with attendees allowed to move freely among them. The tracks for the 2010 Summit are: Equine Industry Structure and Strategies, Association Leadership and Management, Committing to Responsible Equine Care, and Educating Tomorrow's Equine Leaders.

The first Summit covered three subjects: economics, wellbeing, and genetics. The entire 2008 program may now be viewed online at no charge via H-SPAN, a feature of HorseTV.com which was recently launched to provide meaningful programming to a worldwide equine audience.

Updates concerning the 2010 Summit program details and registration information will soon be available at [www.kyequinesummit.com](http://www.kyequinesummit.com)

For more info, contact Amy Lawyer, Equine Industry Program, College of Business, University of Louisville, [amy.lawyer@louisville.edu](mailto:amy.lawyer@louisville.edu)

### SAVE MONEY WITH AHC'S ADVANTAGE PLAN

A membership with the AHC, State Horse Council or an AHC organization entitles you to special savings on products used for your equine farm, business or personal use.

Visit the AHC website for more information on how you can get discounts with John Deere, UPS, Sherwin-Williams, Toshiba Direct, Office Depot, Equine Travel Advantage and Moxie Equestrian. You can buy products directly from these companies at greatly reduced prices.

For more information visit  
[www.horsecouncil.org/advantage\\_plan.php](http://www.horsecouncil.org/advantage_plan.php)



Riding On Angels' Wings therapeutic horseback riding program in Felton, MN provides services to children with disabilities - ages 2-18. Riding On Angels' Wings offers three sessions per year - 6-week spring and fall sessions along with a 12-week summer session. Our program consists of NARHA Instructors, Occupational Therapists, Physical Therapists and Certified Occupational Therapy Assistants assisting with our riders. The program employs 12-15 part-time staff and one full-time staff person along with numerous volunteers. Our program began in 2002 with seven riders and has grown to over 80 riders in 2009.

The Minnesota Horse Council awarded Riding On Angels' Wings \$1,400 to be used for the purchase of panels for their program. Some of the panels are being used in the new indoor riding arena, along with others that have provided safer sorting lots for our horses.

Riding On Angels' Wings is very grateful to the Minnesota Horse Council for their donation and their support of our program. If you would like to view our program, go to [www.riding-onangelswings.org](http://www.riding-onangelswings.org) or contact us at 218-359-0007 or [execdirectorROAW@aol.com](mailto:execdirectorROAW@aol.com).

---

#### *Unwanted Horse Coalition - continued from page 5*

Survey respondents believe the top solutions for solving the problem of unwanted horses are to educate owners to purchase and own responsibly, increase the ability of private rescue and retirement facilities to care for unwanted horses, reopen the U.S. processing plants, and increase options and resources for euthanizing and disposing of unwanted horses.

"One of the highlights of the survey is the willingness by all respondents to resolve the unwanted horse problem," said Tom R. Lenz, DVM, chair of the UHC. "We believe these findings will be useful in identifying common ground for all interested groups and aid us in developing solutions that will have a profound and lasting impact on the lives of unwanted horses and the horse industry at large."

The survey was conducted from November 2008 to January 2009 by an independent market research company. More than 23,000 horse owners, equine industry stakeholders and non-horse owners participated. For more information, contact Julia Andersen, UHC director, at (202) 296-4031 or [jandersen@horsecouncil.org](mailto:jandersen@horsecouncil.org).



## **The Humane Society of the United States Releases List of Humane Options for Disposal of Horse Remains**

The Humane Society of the United States released a national list of humane resources for horse owners making end-of-life arrangements for their equine companions.

"Providing a humane, dignified death for your horse is simply responsible horse ownership," said Keith Dane, The Humane Society of the United States' director of equine protection. "No one likes to think about the death of a beloved companion, but planning ahead is key to understanding your options. This resource list gives horse owners the information they need to plan effectively."

The list includes state-by-state information on low-cost euthanasia programs, equine crematories, horse cemeteries, rendering facilities and landfills. State agriculture and veterinary contacts and state regulations are also included. The list for Minnesota resources can be viewed at [www.hsus.org/horses\\_equines/resources](http://www.hsus.org/horses_equines/resources)

A recent survey of equine veterinarians and carcass disposal service providers indicated it costs about \$300 for humane euthanasia and carcass disposal. In most parts of the country, this cost is equal to or less than the cost of one month's care. With proper care, horses can live well into their 20s and 30s. The latest available data shows there are more than 9 million horses in the United States, making this resource a valuable tool for the millions of Americans involved with horses.

The Humane Society of the United States is providing this list because, due to variations in laws and the availability of services across the country, horse owners often don't know their options when it comes to disposing of their horse's remains. With hundreds of listings for service providers across the country, this tool will ease the burden of seeking out disparate sources of information. It is expected that the list will grow over time, as the public and service providers become aware of this resource. Vendors who wish to have their information added to the list should contact Marika O'Brien at [mobrien@hsus.org](mailto:mobrien@hsus.org).



## **APRIL 23♦24♦25**

## USRider Encourages Use of Pre-Trip Checklist

Based on accident research, checklist helps improve safety

After several years of analyzing accidents involving horse trailers, USRider, the national provider of roadside emergency assistance for horse owners, has developed a checklist to help equestrians avoid accidents on the road.

“We believe you can never over-prepare for a trailering trip with your horse,” said Mark Cole, managing member for USRider. “Even if you are only going to travel a short distance to a local event, an accident or some other emergency could occur leaving you stuck on the highway unexpectedly for an extended period.”

Working with Dr. Tomas Gimenez, retired professor of Animal and Veterinary Sciences at Clemson University, and Dr. Rebecca Gimenez, an animal physiologist and a primary instructor in technical large-animal emergency rescue, USRider has been gathering and analyzing data about horse trailer accidents for the last six years. From this data, Drs. Gimenez and USRider have gleaned some pertinent recommendations for preventing accidents and enhancing the safety of horses while traveling.

This information has been compiled in a handy Pre-Trip Checklist for Horse Trailers. The checklist is conveniently available to Smartphone users on USRider's mobile website. Simply access [www.usrider.org](http://www.usrider.org) from any Smartphone and the list is handily at your fingertips to check prior to each trip.

Items to check before starting a trip include:

- ◆ Wheel bearings (Be sure to have bearings serviced annually, or 12,000 miles, regardless of mileage due to possible moisture buildup. It's also important to carry a spare wheel bearing set in case of premature failure.)
- ◆ Tires (Look for dry rot, uneven tire wear, overall tire wear and damage. Be sure to replace tires every 3-5 years regardless of mileage.)
- ◆ Tire pressure (Don't forget to check spares and inside tire on dual wheels as well.)
- ◆ Hitch (Ensure that it is locked on the ball and that correct sized ball is being used.)
- ◆ Safety cables/chains (Check to see that these are securely connected.)
- ◆ Electrical connection (Make sure it's plugged in and secured.)
- ◆ Breakaway system (Ensure that this is connected and secured as well.)
- ◆ Emergency battery (Check to see that it's charged.)
- ◆ Trailer lighting (Check lights for the brakes and turn signals, as well as running and perimeter lights.)
- ◆ Brake controller (Test to ensure that it's working properly.)
- ◆ Trailer (Before loading horses, check the trailer for any hazards.)
- ◆ Horses (Don't forget to put shipping boots and head bumpers on horses.)
- ◆ Doors (Secure and latch all trailer doors. Place a snap hook or carabineer to prevent accidental opening.)
- ◆ Headlights (For greater safety, drive with highlights on.)
- ◆ Drive safely - allow greater braking distance, and travel at generally slower speeds.

Be sure to check the contents of their equine and human first aid kits. Any depleted and out-of-date items should be replaced. A list of recommended items for first aid kits is posted at [www.usrider.org](http://www.usrider.org).

USRider advises horse owners NEVER to depend on others to hitch their trailer. “The driver is ultimately responsible. Even if someone else actually does the hitching, the driver should always go behind them to double-check that the trailer is properly hitched.” said Cole.

“Trailers that are properly hitched do not come unhitched. It is amazing how many trailers are sitting on a ball from tongue weight alone, but the hitch mechanism is not latched, or locked on the ball. Trailer accidents where the trailer comes loose from the trailer have a high incidence of human and equine fatalities. Worst of all, these kinds of incidents are highly avoidable,” he added.

USRider also encourages horse owners to use ICE, which stands for In Case of Emergency. This initiative was designed to aid emergency responders in identifying victims and determining who needs to be notified. Implementing ICE is easy. Program your emergency contact information into your cellular phone and designate it with the acronym ICE.

Horse owners should be sure to store their emergency contact information in their tow vehicle. To facilitate this, USRider has developed an In Case of Emergency form and posted it online for horse owners to print out. Simply fill in the blanks and store the paper in the tow vehicle as well as in the trailer. Additional safety recommendations as well as a Power of Attorney form are posted on the USRider website at [www.usrider.org](http://www.usrider.org).

To gather further accident information, USRider is continuing the trailer accident study. USRider encourages all horse owners, trainers, emergency responders, veterinarians and others who have somehow been involved in horse trailer incidents to participate in the survey. Visit [www.usrider.org](http://www.usrider.org) to download the survey form.

The information being collected includes type of transport, type of towing vehicle, number and type of horses in transport, cause of accident, results of accident, extent of human and equine injuries, and type of personnel involved in rescue.

Designed for horse owners, USRider provides nationwide roadside assistance and towing services along with other travel-related benefits to its members through the Equestrian Motor Plan. For more information, visit [www.usrider.org](http://www.usrider.org) online or call (800) 844-1409.

## Horses that Roar: Laryngeal Hemiplegia

By Rolf Modesto, DVM, University of Pennsylvania

UNIVERSITY OF MINNESOTA  
EXTENSION

The horse larynx (Figure 1) protects the trachea (windpipe) and produces sound. These functions are carried out primarily by the arytenoid cartilages. The arytenoids open to allow air to enter the trachea (breathing) and close to stop food from entering (eating). The arytenoids open further during exercise than they do during quiet breathing at rest. This allows more air and oxygen to enter the lungs.



FIGURE 1 - Normal

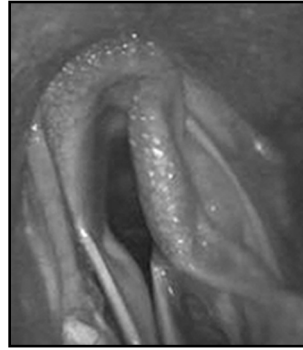


FIGURE 2 - Hemiplegia

With laryngeal hemiplegia (Figure 2), the arytenoid cartilages can't open sufficiently and/or maintain the opening due to paralysis or paresis (weakness). This leads to a reduction in the diameter of the airway, resulting in abnormal noise because of increased air turbulence in the larynx. This sound is often referred to as "roaring" or "whistling".

Laryngeal hemiplegia can be seen in horses of all ages: from a few months to 10 years or older. Many horses are not affected until 5 to 6 years of age, and have progressively more noisy breathing. Large-breed horses are more commonly affected than small-breed horses or ponies. Laryngeal hemiplegia is common in racehorses, and some cases of laryngeal hemiplegia can worsen over time. Studies on Thoroughbreds show this happens 5 to 15% of the time.

The weakness of the arytenoid cartilage is caused by a progressive loss of the large nerve fibers that supply the laryngeal muscles. This loss decreases or stops the action of the muscles on the affected side. Total loss of nerve supply causes the arytenoid cartilage to be paralyzed and hang into the opening of the trachea. The disease can affect one or both arytenoids but left sided arytenoid paralysis is most common.

In many cases, the nerve stops working for an unknown reason. Trauma may also cause laryngeal hemiplegia in approximately 6-11% of cases. The most common causes of trauma include an irritating injection in or around the jugular vein, neck trauma, guttural pouch infection, cancer, strangles, head or neck abscess, toxins (lead, certain plants), and general anesthesia or surgery of the neck.

Horses that have a history of making noise during exercise and/or have a history of poor performance may have laryngeal hemiplegia. The noise is often described as rattling, snoring, or whistling. The noise can be heard during or immediately after exercise. These horses may also have an abnormal whinny or

neigh. Horses with laryngeal hemiplegia may cough due to aspiration of food material into the trachea.

High level performance horses diagnosed with laryngeal hemiplegia often have poor performance or loss of endurance. With the inability of the cartilage to open completely or maintain the opening to the trachea, the amount of air that reaches the lungs is decreased.

This results in decreased oxygen flowing to the muscles and other tissues in the body and leads to fatigue during exercise. Some horses may never show signs of exercise intolerance due to the level of work the horse performs.

Palpation of the throat is the first step in identifying laryngeal abnormalities. Due to atrophy of the muscle, the cartilages can be more readily palpated on the affected side.

Endoscopic examination is indicated in all cases with respiratory noise or poor performance (if not related to lameness). The procedure can be performed in horses standing still or during exercise on a high-speed treadmill. Because many different conditions can lead to abnormal noise, endoscopic examination is essential to confirm the presence and determine the severity of laryngeal hemiplegia. The diagnosis is given based on the movement and symmetry of the cartilages. The cartilages should move fully open and closed in a mirror-like fashion. Different techniques are used to stimulate the cartilages to move during the resting exam: stimulation of swallowing, slapping the withers, holding off the nostrils, etc.

Endoscopic examination immediately after exercise can also be useful, particularly if a high speed treadmill is not available. If it is possible to scope the horse within minutes of galloping, when the effects of elevated respiratory rate and airflow on the upper airway are still present, evidence of abnormal arytenoid function may be visible.

Ideally, horses are scoped while exercising on the treadmill. This allows for true evaluation of the arytenoid movement under working conditions. Changes are often seen on the treadmill that aren't seen in any other type of examination.

Evaluation for laryngeal hemiplegia is strongly advised prior to purchase of horses destined to be elite athletes.

Depending upon the intended use of the horse, there are several treatment options. Higher level athletes are often treated by "tieback" (tying the arytenoid out of the way) or arytenoidectomy (removing the arytenoid to open up the airway). Horses used more for pleasure riding or lower level work may benefit from laser surgery to remove parts of the arytenoid or vocal cords. Prognosis varies depending upon the use of the horse but 60 to 70% of racehorses improve, and the prognosis is even better in other groups of working horses.

Dr. Modesto was previously with the University of Minnesota. Reprinted from the July 2009 U of M Horse Newsletter, Vol. 5, Issue 7.



**MINNESOTA HORSE COUNCIL BOARD MINUTES**

June 9, 2009

Meeting Location: Nutrena Conference Room - Leatherdale Center  
U of MN St Paul

**Board Members:**

Present: Glen Eaton, Darrell Mead, Dawn Moore, Missie Schwartz,  
Marian Robinson, Mark Ward, Trina Joyce, Jan Schatzlein,  
Tim Bonham, Carol Dobbelaire, Judy Jensen, Christie Ward,  
Sue McDonough, Lynn Wasson, Tracy Turner

Absent: Teresa Hanson, Trina Joyce, Tom Tweeten

Members/Visitors: Rick Dobbelaire and Miriam McGurran

**I. Meeting called to order:** 6:33 p.m. by Mark Ward

**II. Introduction of Board Members/Visitors:** Mark Ward introduced the aforementioned guests.

**III. Call for Additions/Changes to Agenda**

**IV. Treasurer's Report** for June was distributed by Tim Bonham. Marian Robinson requested the two recent donations to the disaster fund be reflected in that budget and not in the general funds. Darrell Mead motioned to accept the May treasurer's report as presented; Carol Dobbelaire seconded, motion passed.

**IV. Approval of Minutes** - Tim Bonham motioned to approve the May minutes with corrections, Tracy Turner seconded, motion passed.

**V. Secretary's Report** - Dawn Moore- no report.

**VI. OLD BUSINESS**

**A. State Fair Coliseum Horseman of the Year Display** - Judy Jensen reported the friends of Ken Bohlman are excited at the prospect of the plaque been restored to the HPY display at the MN State Fair. Dawn Moore reported the plaque has been located and should be returned to the MHC shortly. Mark Ward reported the WSCA has been contacted and they have sent an email stating they have no issues with the plaque being returned to the display.

**B. Tri State Horsemen's Association's grant request** - Judy Jensen addressed the questions raised by the MHC directors after the presentation at the May meeting. There are 10% of the MHC members that are Tri-State members as well. There will be not be a grant request for the MN State Fair by the TS Horsemen's Association next year; they feel this is simply a way to draw people to the show and if it is not effective the horse show may simply not be around next year. Discussion followed on the distribution of the monies, recognition of the donation, and follow up to see if the funds had an impact on the bottom line on the MN State Fair Horse Show. Jan Schatzlein motioned to match grant money raised by the TriState Horsemen's Association, not to exceed \$25,000. Marian Robinson seconded. Tim Bonham requested there be a contract drawn up by Judy Jensen to be approved by the MHC executive board prior to dispersal.

**C. U of MN Equine Center request for stable funding** - Mark Ward refreshed the board on the request from the U of MN. Christie Ward reported that the U of MN is actively fundraising currently. The additional stabling will allow for additional clinics, seminars, etc. The U of MN is donating at least \$10,000 to this project. The fundraising efforts have reached \$24,000 thus far. One barn will be targeted as a spillover barn for the hospital and research animals. The second barn will be dedicated to the events only. Jan Schatzlein motioned to match up to \$25,000 towards the building of the event barn at the U of MN. Discussion followed. A vote of the board of directors of the MHC resulted in 5 votes in favor and 7 votes against. The motion does not carry.

**D. United Organizations of the Horse** - Glen Eaton reported this organization was founded about one year ago. The organization is dedicated to the horse slaughter issue currently facing the United States. More information will be offered at the Washington SHCAC meeting. Tracy Turner motioned to join the United Organizations of the Horse at the \$500 level. Lynn Wasson seconded, motion passed. Tim Bonham motioned to make a resolution to support the H.O.R.S.E. Act from the MHC and see that we communicate our position to the MN legislature. Carol Dobbelaire seconded, motion passed.

**VII. COMMITTEE REPORTS**

**A. EXPO** - Glen Eaton reported the following: The accounts receivable and payable the Minnesota Horse Expo is not complete at this time so the 2009 Minnesota Horse Expo is not complete. The attendance was approximately 50,000. A bottom line report should be available at the July meeting. Great surveys are coming in from the General Public as well as the Vendors and the Stall Renters. We are having a great response to our Clinicians The 2010 Minnesota Horse Expo to be held April 23, 24, and 25 is well under way. As reported in the May report the Cattle Barn is taking a new look inside. Two weeks ago the stalls on the north half were gone and Steve Poach stated he thought the Foundation will have enough funds to do the south half so here will be a whole new layout for the Cattle Barn. The first contract packets will be mailed August 30 to the 2009 Vendors and Stall Renters. The Priefert Texas Thunder Percherons will be the halftime act for the rodeo.

**B. Direct Funding** - Christie Ward reported via email the following: Proposals to be considered today:

1. Whips and Wheels Driving Society ♦ Pat Hartell  
This organization is requesting \$500 to support the First Annual Prairie Home Carriage Festival, to be held May 3, 2009 at the Dakota County Fairgrounds in Farmington, MN. This event will feature a variety of educational demonstrations that focus on horses, carriages and driving, blacksmiths, gardening, and plowing.

2. Jackie and Solei's Wild Ride ♦ Jacquelyn Wildstar Haight  
Ms. Haight is requesting \$500 to support a 4-month ride through the upper Midwest designed to raise awareness regarding the plight of the Unwanted Horse. Funds will be used to cover expenses related to veterinary care, farrier work, and feed for her horse, Solei. Ms. Haight and Soleil are planning to travel 1200 miles across Minnesota, South Dakota, and Wisconsin in June through September 2009, with stops at 9 different equine rescue organizations along the way.

Proposals approved previously:

1. Southern Valley Alliance for Battered Women ♦ Shannon Bruce  
This organization was awarded \$500 to support development of brochures and an informational web page for their Equine Therapy pilot program designed for victims of domestic violence. They have partnered with MN LINC in development of their curriculum and plan to initiate services in the Twin Cities area by autumn 2009.

Direct Funding proposals approved for 2009 to date:

Rum River Equestrian Farm/Sheriffs Youth Programs of MN: \$500

Run Fast... Ride Hard Saddle Club: \$500

University of Minnesota Horse Extension Program: \$500

Southern Valley Alliance for Battered Women: \$500

Total Direct Funding approved for 2009: \$2000 to date

**C. Communications** - Missie Schwartz reported that for every 17 people who receives the newsletter via email the MHC saves about \$600 per year. Missie Schwartz requested that directors submit articles for the newsletter. It was suggested that it be announced in the next newsletter that unless otherwise specified the newsletter will be delivered via email in the future. Mark Ward and Missie Schwartz will work on the vehicle to deliver this announcement to the membership.

**D. Inventory/Storage** - Glen Eaton reported the fees have been paid for another year.

**E. SHCAC** - Glen Eaton reported: On May 26, two conference calls were held. The first one was the SHCAC Task Force only and the second one was with the AHC and SHCAC Task Force. A great discussion was held by both conference calls and we are looking for a good meeting in Washington at the AHC meeting June 14-18. It was voted to send the 11 page report of all of the conference calls to all Horse Councils and it did take place. I have received some calls concerning the report. David Howell (SHCAC) Chairperson will be stepping down at the Washington AHC meeting so a new Chairperson will be elected. Sally Blount of the Iowa Horse Council will receive the Van Ness Award at the Tuesday noon Luncheon and we feel she is well deserved of the award. We know this award will be coming up for 2010 so lets get our ducks in a row and get our person nominated.

**F. Certified Stables** - Sue McDonough reported: This year has been very busy for the Certified Stable program. There have been five new stables that have joined this year: Spirit Horse Center (Brainerd), Ride Sports Stables (Corcoran), Walker TripleR (Isanti), Featherbrook Farm (Corcoran), and Sunborn Stable (Chisago City). We will be working on certifying four additional interested stables in the coming months. There were also two stables that we recertified this year. The Certified Stable Program has ordered 30 new CS signs. There have been calls for sign replacement due to fading. Signs were last ordered in 1998. Please take the time to welcome our newest stable, Sunborn Stables Inc., Owner: Julie Penshorn, 24110 Morgan Ave., Chisago City, MN 55013, 651-257-9825. I enjoyed meeting Julie and seeing her beautiful facility. The Certified Stable Program has 55 stables in the program.

**G. Aisle of Breeds** - Glen Eaton reported the following: As stated in he May report the Minnesota State Fair is August 27 through September 7. We will set up the Aisle of Breeds display on Tuesday, August 25 and will take down on September 8. We will need help with setup and take down and also for the information table attendees. At the July meeting I will pass out a sign up sheet for table attendees so think about when you can attend. The Horse Barn is closed Wednesday, September 2.

#### X. NEW BUSINESS

A. Mark Ward reported there was a meeting (facilitated by Krishona Martinson) in which Mark Ward, Tracy Turner and Tom Tweeten, along with the economic department from the U of MN to determine what the next steps are that the MHC needs to take to ensure representation on the study committee that the MN department of revenue is mandated to put together. Our attorney, Allison Eklund, is in the process of contacting the assistant director of the property tax division in the MN Department of Revenue, John Hagen.

**IX. ADJOURNED** at 8:20PM

#### NEXT MEETING

July 14, 2009 ♦ 6:30 p.m.

University of MN ♦ Leatherdale Equine Center

### MINNESOTA HORSEMEN'S DIRECTORY

The goal of the Minnesota Horsemen's Directory is to compile a comprehensive listing of horse-related services in and near the state so that horse-people can find relevant information quickly.

The Directory includes free listings--businesses and organizations can submit a listing for free. The Directory will be advertisement-free.

[www.minnesotahorsemensdirectory.com](http://www.minnesotahorsemensdirectory.com)

## 2009 MEETING SCHEDULE

View [www.mnhorsecouncil.org](http://www.mnhorsecouncil.org) and [www.minnesotahorsemensdirectory.org](http://www.minnesotahorsemensdirectory.org) for additional events

### Minnesota Horse Council Board Meetings

Leatherdale Equine Center ♦ 6:30 pm  
1801 Dudley Ave ♦ St, Paul  
Located on the U of M St. Paul Campus

February 10	June 9	October 13
March 10	July 14	November 10
April 7	August - No meeting	December 8
May 12	September 8	
January 16, 2010 - Annual Meeting - Northland Inn		

### Minnesota Horse Expo Board Meetings

Byerly's Community Room ♦ 6:30 pm  
3777 Park Center Drive ♦ St. Louis Park, MN

January 27	May 26	September 29
February 23	June 30	October 27
March 31	July 28	November 24
April 28	August - No meeting	December 29

## For Horse's Sake

Editors: Linda Dahl and Missie Schwartz

Publisher: Dahl Graphic Design

888-403-2060 ♦ [www.dahlgraphics.com](http://www.dahlgraphics.com)

Missie Schwartz: 763-428-7532 ♦ [bmschwartz@msn.com](mailto:bmschwartz@msn.com)

*For Horse's Sake* is the official newsletter of the Minnesota Horse Council (MHC). Statements appearing in *For Horse's Sake* are those of the authors and not necessarily those of the MHC. To reprint any material published in *For Horse's Sake*, please notify MHC of your intentions. Full credit needs to be given to the author. Articles of relevance to the equine industry are earnestly solicited. The Minnesota Horse Council is a non-profit member-supported volunteer organization representing all equine disciplines and breeds in Minnesota's equine livestock industry.

Please e-mail or send potential articles to:

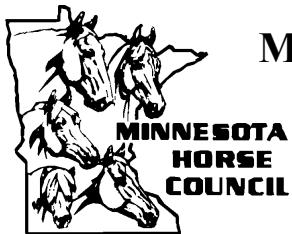
Dahl Graphic Design

39257 Taray Road ♦ Pine River, MN 56474

E-Mail: [fhs-mhc@dahlgraphics.com](mailto:fhs-mhc@dahlgraphics.com)

### 2009 Article Submission Deadlines

January/February	1/23/09	July/August	6/12/09
March	2/13/09	September	8/14/09
April	3/13/09	October	9/11/09
May	4/10/09	November	10/16/09
June	5/15/09	December	11/13/09



## MINNESOTA HORSE COUNCIL MEMBERSHIP APPLICATION

- |  |  |
|--|--|
| <input type="checkbox"/> Individual - \$15   | <input type="checkbox"/> Corporation - \$25                    |
| <input type="checkbox"/> Family - \$20       | <input type="checkbox"/> Certified Stable<br>First Year - \$35 |
| <input type="checkbox"/> Organization - \$25 | <input type="checkbox"/> Certified Stable<br>Renewal - \$25    |

Name \_\_\_\_\_

Farm/Business Name \_\_\_\_\_

Address \_\_\_\_\_

City/State/Zip \_\_\_\_\_

Phone \_\_\_\_\_

Alt. Phone \_\_\_\_\_

E-mail \_\_\_\_\_

Website \_\_\_\_\_

**Brief description of your stable/business/involvement with horses:**

\_\_\_\_\_

\_\_\_\_\_

\_\_\_\_\_

**Would you like to volunteer with MHC? If so, please list any interest you have:**

\_\_\_\_\_

\_\_\_\_\_

\_\_\_\_\_

**I'd like to receive the MN Horse Council newsletter, "For Horse's Sake" by:**

- E-mail (saves on postage and paper)
- United States Postal Service

Please complete this form and send with your check to:

**Minnesota Horse Council**  
PO Box 223  
Plato, MN 55370

## Minnesota Horse Council



PO Box 223  
Plato, MN 55370  
763-755-7729  
mn.horsecouncil@comcast.net  
www.MnHorseCouncil.org

### COMMITTEE CHAIRS

**Annual Meeting**

Dawn Moore ♦ 952-949-6659 ♦ dmoore834@comcast.net

**Aisle of Breeds**

Glen Eaton ♦ 952-922-8666 ♦ Glen@MnHorseExpo.org

**Budget**

Mark Ward ♦ 651-436-6557 ♦ markward@windyridgeranch.com

**Certified Stables**

Sue McDonough ♦ 651-699-8117

**Communications**

Missie Schwartz ♦ 763-428-7532 ♦ bmschwartz@msn.com

**Direct Funding**

Christie Ward ♦ 651-603-8702 ♦ malaz002@umn.edu

**Disaster Response**

Marian Robinson: ♦ 763-588-0297 ♦ mariana\_1820@yahoo.com

**Expo**

Glen Eaton ♦ 952-922-8666 ♦ Glen@MnHorseExpo.org

**Facilities**

Tom Tweeten ♦ 952-226-4190 ♦ tnt@integraonline.com

**Grants**

Tim Bonham ♦ 612-721-1007 ♦ t-bonham@scc.net

**Horseperson of the Year**

Dawn Moore ♦ 952-949-6659 ♦ dmoore834@comcast.net

**Inventory/Storage**

Glen Eaton ♦ 952-922-8666 ♦ Glen@MnHorseExpo.org

**Legislative**

Tracy Turner ♦ 651-351-7206 ♦ turner@anokaequine.com

**Minnesota Horsemen's Directory**

Mark Ward ♦ 651-436-6557 ♦ markward@windyridgeranch.com

**Nominations**

Mark Ward ♦ 651-436-6557 ♦ markward@windyridgeranch.com

**Pioneer Award**

Dawn Moore ♦ 952-949-6659 ♦ dmoore834@comcast.net

**Promotions**

Teresa Hanson ♦ 763-434-2799 ♦ trhanson2@hotmail.com

**Scholarships**

Trina Joyce ♦ 612-729-7798

**Trail Blazers**

Darrell Mead ♦ 763-420-3697 ♦ darrellmead@comcast.net

**State Horse Council**

Glen Eaton ♦ 952-922-8666 ♦ Glen@MnHorseExpo.org

**Administrative Assistant** - Andrea Dubay ♦ 763-755-7729  
mn.horsecouncil@comcast.net

## *In This Issue*

Tony Gasser Memorial Scholarship Applications Due November 1.....	1
MHC Grant Applications Due October 1.....	2
2010 MHC Annual Meeting.....	2
U of M Extension Programs.....	2
Meeting with DNR Tuesday June 30.....	2
The AAEP Updates Statement on Genetic Defects in Horses.....	3
Rolapp Award Goes to Congressman Ben Chandler.....	4
2009 Van Ness Award Presented to Sally Blount of Iowa.....	4
Tourism Promotion Bill Introduced in Senate.....	5
Unwanted Horse Coalition Releases National Survey Results.....	5
Second Kentucky International Equine Summit Scheduled.....	5
Save Money with AHC's Advantage Plan.....	5
Riding on Angels' Wings.....	6
The Humane Society of the U.S. Releases List of Humane Options for Disposal of Horse Remains....	6
USRider Encourages Use of Pre-Trip Checklist.....	7
Horses that Roar: Laryngeal Hemiplegia.....	8
MHC June Board Minutes.....	9
2009 Meeting Schedule.....	10
MHC Membership Application.....	11
MHC Committee Chairs.....	11



### **Minnesota Horse Council**

PO Box 223  
Plato, MN 55370

Return Service Requested



**Please note  
new address  
above!**